

# Continuous Improvement Process

## FRAMEWORK FOR GREAT



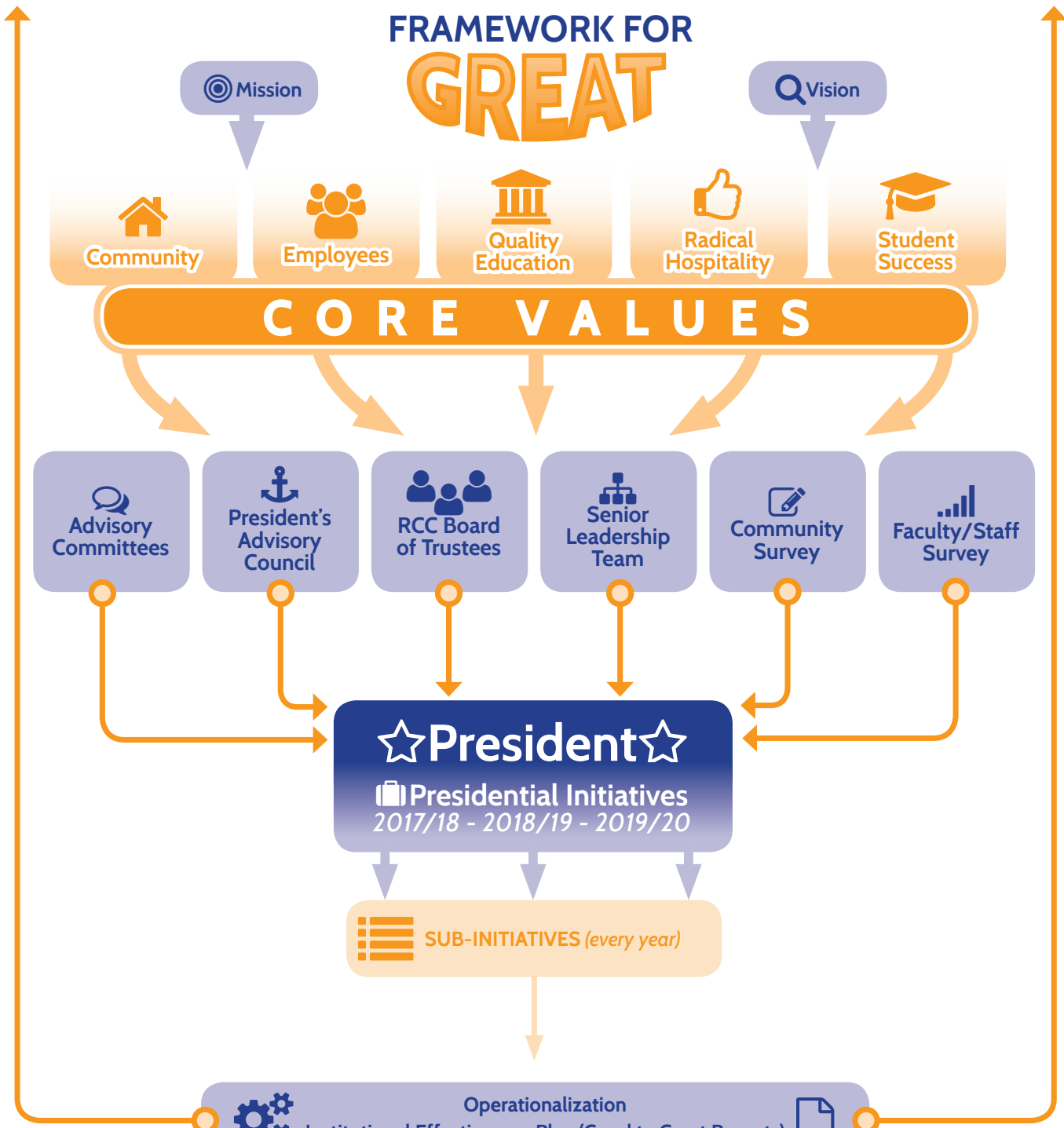
### CORE VALUES



☆ **President** ☆  
📁 **Presidential Initiatives**  
2017/18 - 2018/19 - 2019/20

☰ **SUB-INITIATIVES** (every year)

⚙️ **Operationalization**  
Institutional Effectiveness Plan (Good to Great Reports) 📄





**Mission:** To provide educational and training opportunities that make a positive change in the lives of students and the community.

**Vision:** To be the premier educational resource for helping the people of Randolph County achieve their career goals and personal dreams.

Presidential Initiatives are positioned around Randolph Community College's **Core Values:**

**Community:** Advance Randolph County Strategic Plan

**Employees:** Improve Enrollment Management

**Quality Education:** 10<sup>th</sup> Anniversary Renewal of Good to Great

**Radical Hospitality:** Recreate Advising and Student Success Systems

**Student Success:** Better Match Skills Taught with the Workforce

In addition, in the final quarter of the fiscal year, the College president will develop specific sub-strategies designed to move the college ahead. These will be presented to the Trustees during their July Board meeting and presented to the RCC Faculty and Staff at the Fall Convocation in August. Progress on the Presidential Initiatives for the previous year will be reported to the board annually at its March meeting or at the Board's annual retreat (usually held in February or March).